

How to use SW License

How to use SW License

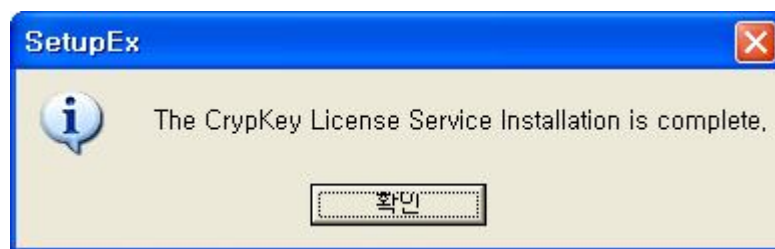
If you have to run the BioStar SE in the system that USB dongle is not able to be supported, we support SW License(SL). We make it rule to provide only those who bought the BioStar SE. SL will be provided in sales department's judgment. Issue of SL has been managed by hand, and we need to give attention to manage if users had bought BioStar SE before and they request to have SL more than the number of dongle license that they bought.

SL installation and Importing Site Code in users' system

1. Installation

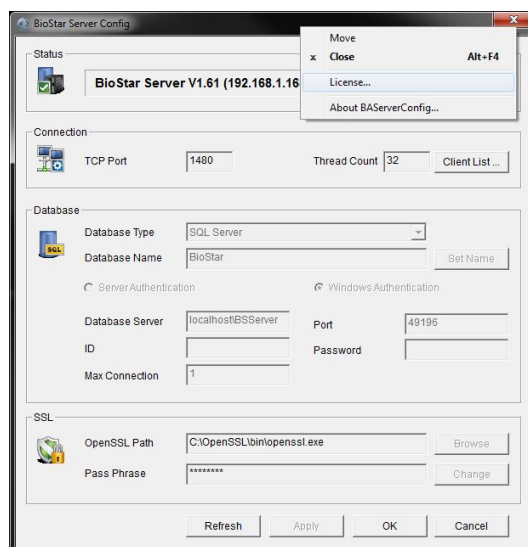
1.1 Install BioStar V1.62.

1.2 Run the C:\Program Files\BioStar\Server\Support\CrypKey License Service\SetupEx.exe file.
You can check pop-up like below, if installation is successful.



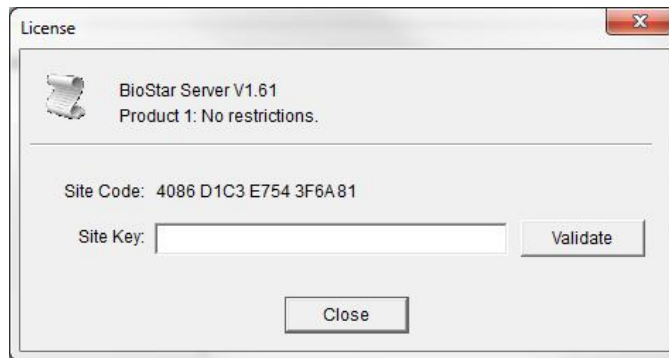
2. Importing Site Code

2.1. Run the BioStar Server Config, and click your mouse right button.
And then you can check pop-up menu. Then Click the License.

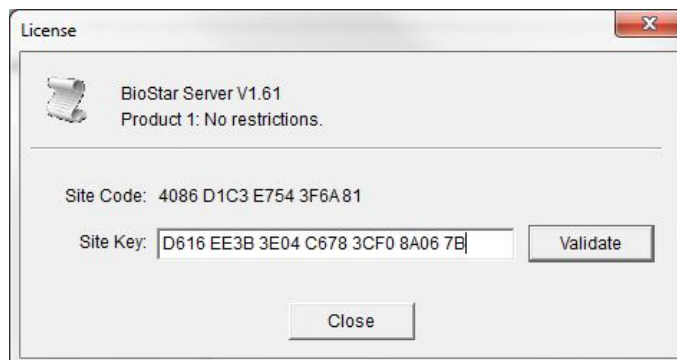


How to use SW License

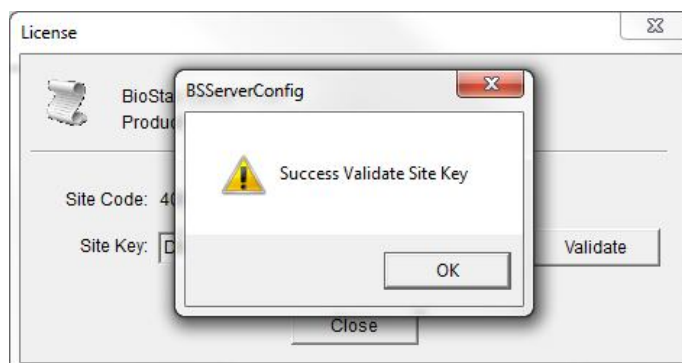
- 2.2. After copying the Site Code by mouse drag,
send it to a person in charge of Suprema Software License by email.



- 2.3. After input the Site Key, then click validate button.



- 2.4. Check if certification is successful.



- 2.5. BioStar SE will be running, if you run the BioStar Server.