

TS0073 – How to calculate total number of user slots for BioLite Net, BioEntry Plus

APPLIES TO: BioLite Net, BioEntry Plus

Overview

In this document, we would like to explain the logic behind BioLite Net and BioEntry Plus when saving users in the device.

Specification

The maximum number of users that can be stored in BioLite Net and BioEntry Plus is 5,000 users (10,000 templates) based on the fact that users only have 1 fingerprint enrolled. But the number of users that can be stored in these devices can be changed if the users have 2 fingerprints or cards enrolled.

User slot

We would like to describe what "User Slot" is before we go further. User Slot is used to measure the number of users in the device. When a user is enrolled with 2 fingerprints, they are taking 2 user slots. When a user is enrolled with 1 fingerprint or card only, they are taking 1 user slot.

BioLite Net and BioEntry plus have 5,000 user slots available within the device. It is impossible to send all users when the user slots are full.

How to calculate the number of fingerprints enrolled per user from BioStar

BioStar: Go to [User] Menu and add [Template Num] column from the user list.

2014 Suprema, Inc. All right reserved.

This document should be used only for guidance and does not guarantee resolve the issue. Contact us for further information at support@supremainc.com

How to calculate total number of user slots for BioLite Net, BioEntry Plus

User ID	Name	Department	Email	Telephone	Start Date	Expire Date	Admin Level	Card No.	Access...	Access...	Template N...	Face Num
1								1-648	Full A...		1	0
110001								3609932073			1	0
110005											2	0
110011									Full A...		2	0
110013											2	0
110029											2	0
110030											2	0
110031											2	0
110034											2	0
110035									Full A...		2	0
110037											2	0
110038											2	0
110045									Full A...		2	0
110047									Full A...		2	0
110049									Full A...		2	0
110059									Full A...		2	0
110063											2	0
110077											2	0
110090									Full A...		2	0
110092											2	0
110101											2	0
110102									Full A...		2	0
110103									Full A...		2	0
110107											2	0
110108									Full A...		2	0
110118									Full A...		2	0
110119											2	0
110122											2	0
110129											2	0
110137									Full A...		2	0
110138											1	0
110139									Full A...		2	0

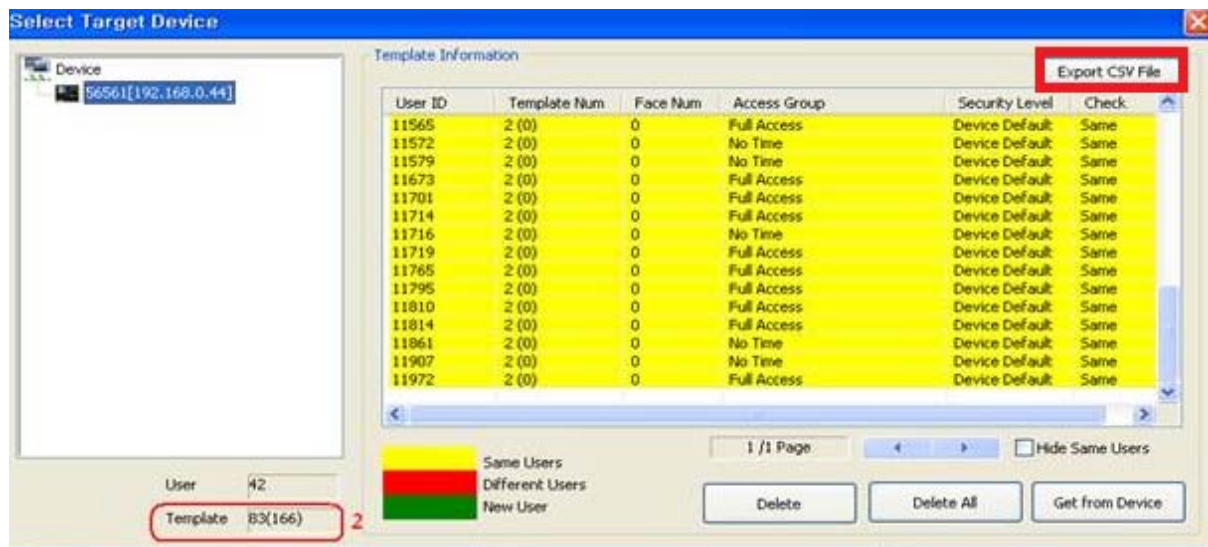
Export all users to .csv file using [Export User] feature and calculate the number of fingerprints enrolled per user.

Calculate the number of users with number of fingerprints enrolled.

How to calculate the number of fingerprints per user from BioLite Net and BioEntry Plus

BioLite Net, BioEntry Plus: Go to [User] Menu and click [Manage Users in Device]. Choose the device you want.

How to calculate total number of user slots for BioLite Net, BioEntry Plus



Export all users to .csv file using [Export CSV User] feature and calculate the number of fingerprints enrolled per user.

Calculate the number of users with number of fingerprints enrolled.

How to calculate the user slot

Below is an example of how to calculate the user slot.

Total Users: **2,830 users**

- Users with 2 fingerprints: 2170
- Users with 1 fingerprints: 23
- Users with card (No fingerprints): 637

Total user slots = **5,000 user slots** (4340 + 23+ 637 = 5,000)

- 2170 x 2 user slots = 4,340 user slots
- 23 x 1 user slot = 23 user slots
- 637 x 1 user slot = 637 user slot

How to calculate total number of user slots for BioLite Net, BioEntry Plus

The total number of users are 2,380, however, when we calculate the total user slots it is 5,000 user slots and therefore we cannot enroll more users to device.

Summary

When [Can't enroll users to the device] error displays during user transfer process, please check the number of user slots.