

# Suprema WEBINAR 2020

2 – BioStar 2 : What it is and How to set it up

---

Speaker



| Cyril AUDIAU |

Technical Support Engineer | Suprema Europe and North Africa

# Contents

1. Webinar Goal
2. What is BioStar 2 Software ?
3. How to Install with MariaDB ?
4. How to Install with MSSQL ?
5. Quick Tour on simple feature.
6. Questions and Answers

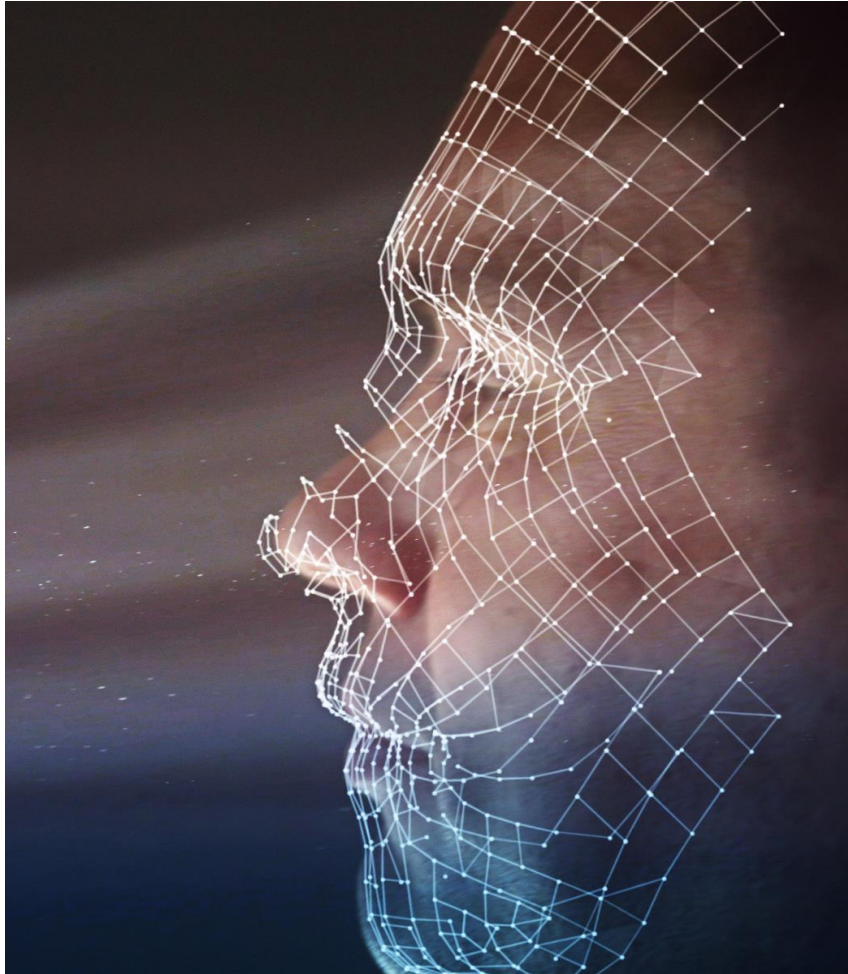
## **DISCLAIMER**

This presentation is solely for the use of Suprema's employees. No part of this material may be circulated, quoted, or reproduced for distribution outside the customer's organization without prior written approval from Suprema Inc. This material was prepared by Suprema Inc. solely for informative purpose and was not independently verified. No representations or warranties, express or implied, are made as to, and no reliance should be placed on, the accuracy, fairness or completeness of the information presented or contained in this presentation. © 2020 Suprema Inc. All rights reserved.

# 0 - Who we are (company)

---

1. Webinar Goal 2. What is BioStar 2 Software 3. How to install with MariaDB 4. How to install with MSSQL 5. Quick Tour on simple features 6. Q&A



## **Global Powerhouse in Biometrics, Security and Identity Solutions**

Suprema is a leading global provider of biometrics and security. By combining world renowned biometric algorithms with superior engineering, Suprema has introduced a number of technology initiatives and innovations to the security industry over the last couple of decades.

# 0 – Who we are (product)

1. Webinar Goal 2. What is BioStar 2 Software 3. How to install with MariaDB 4. How to install with MSSQL 5. Quick Tour on simple features 6. Q&A

## The best in biometrics and security

Suprema provides comprehensive security solutions for security.

Whatever you're looking for, you'll find a Suprema's product to suit your needs. From robust outdoor Biometric Readers to discreet products for sensitive environments, we offer it all.

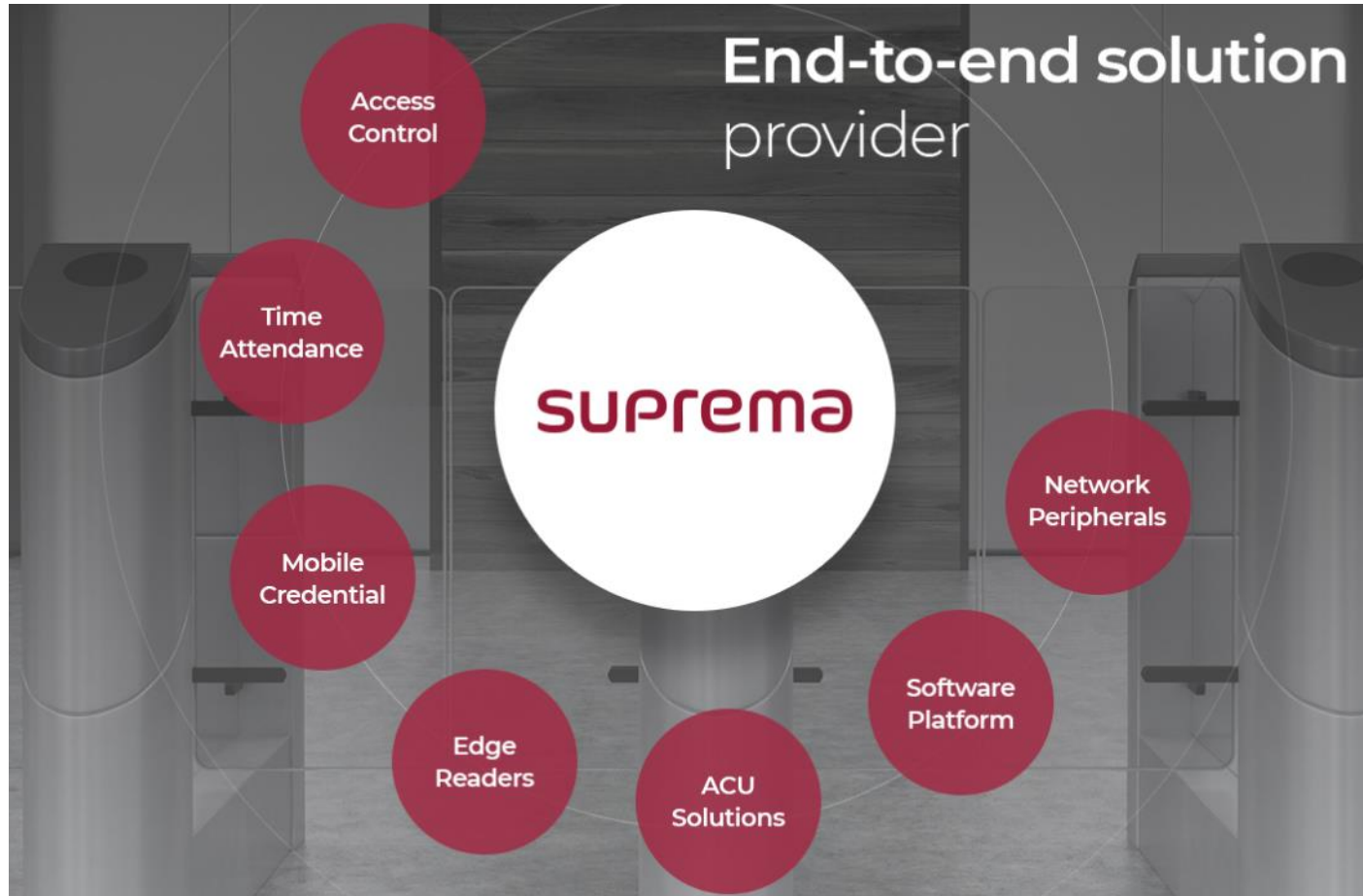


# 0 – Who we are (platform)

1. Webinar Goal 2. What is BioStar 2 Software 3. How to install with MariaDB 4. How to install with MSSQL 5. Quick Tour on simple features 6. Q&A

## Biometrics Platform with Easy Use, Installation and Integration

BioStar2, Web-based open integrated security platform.



# 0 – Who we are (platform)

1. Webinar Goal 2. What is BioStar 2 Software 3. How to install with MariaDB 4. How to install with MSSQL 5. Quick Tour on simple features 6. Q&A

## Biometrics Platform with Easy Use, Installation and Integration

BioStar2, Web-based open integrated security platform.



E – Multi finger reader (Governmental)

A – User Management  
B – Fingerprint Template  
C – Face Template  
D – Encryption for reader network

F – Web design  
G – GDPR compliance  
H – Encryption for web access  
I – Encryption for Database

# Contents

## 1. Webinar Goal

## 2. What is BioStar 2 Software ?

## 3. How to Install with MariaDB ?

## 4. How to Install with MSSQL ?

## 5. Quick Tour on simple feature.

## 6. Questions and Answers

### **DISCLAIMER**

This presentation is solely for the use of Suprema's employees. No part of this material may be circulated, quoted, or reproduced for distribution outside the customer's organization without prior written approval from Suprema Inc. This material was prepared by Suprema Inc. solely for informative purpose and was not independently verified. No representations or warranties, express or implied, are made as to, and no reliance should be placed on, the accuracy, fairness or completeness of the information presented or contained in this presentation. © 2020 Suprema Inc. All rights reserved.

# 1 - Webinar Goal

---

1. Webinar Goal 2. What is BioStar 2 Software 3. How to install with MariaDB 4. How to install with MSSQL 5. Quick Tour on simple features 6. Q&A

- **Answer to :**
  - What is BioStar2 ?
  - How it works ?
  - Scope of use.
- **How to setup it without any issue for both DB**
- **Discovering the main simple feature :**
  - License
  - Reader
  - User
  - ...



# Contents

1. Webinar Goal
- 2. What is BioStar 2 Software ?**
3. How to Install with MariaDB ?
4. How to Install with MSSQL ?
5. Quick Tour on simple feature.
6. Questions and Answers

## **DISCLAIMER**

This presentation is solely for the use of Suprema's employees. No part of this material may be circulated, quoted, or reproduced for distribution outside the customer's organization without prior written approval from Suprema Inc. This material was prepared by Suprema Inc. solely for informative purpose and was not independently verified. No representations or warranties, express or implied, are made as to, and no reliance should be placed on, the accuracy, fairness or completeness of the information presented or contained in this presentation. © 2020 Suprema Inc. All rights reserved.

## 2 – What is BioStar2 Software

1. Webinar Goal 2. What is BioStar 2 Software 3. How to install with MariaDB 4. How to install with MSSQL 5. Quick Tour on simple features 6. Q&A

**BioStar 2 software is a web-based, open, and integrated security platform that provides comprehensive functionality for access control and time & attendance**

### Access Control

**When**

**Who**

**Where**

### Time Attendance



## 2 – What is BioStar2 Software

1. Webinar Goal 2. What is BioStar 2 Software 3. How to install with MariaDB 4. How to install with MSSQL 5. Quick Tour on simple features 6. Q&A

### **BioStar is managing Readers, Users, card, Pin Code, FingerPrint, Face, Controller**

BioStar 2 is the software that manages all the Suprema Devices, like RFID readers, Door Controllers as well as Biometric readers. It also handles SIO2, OM120, DM20.

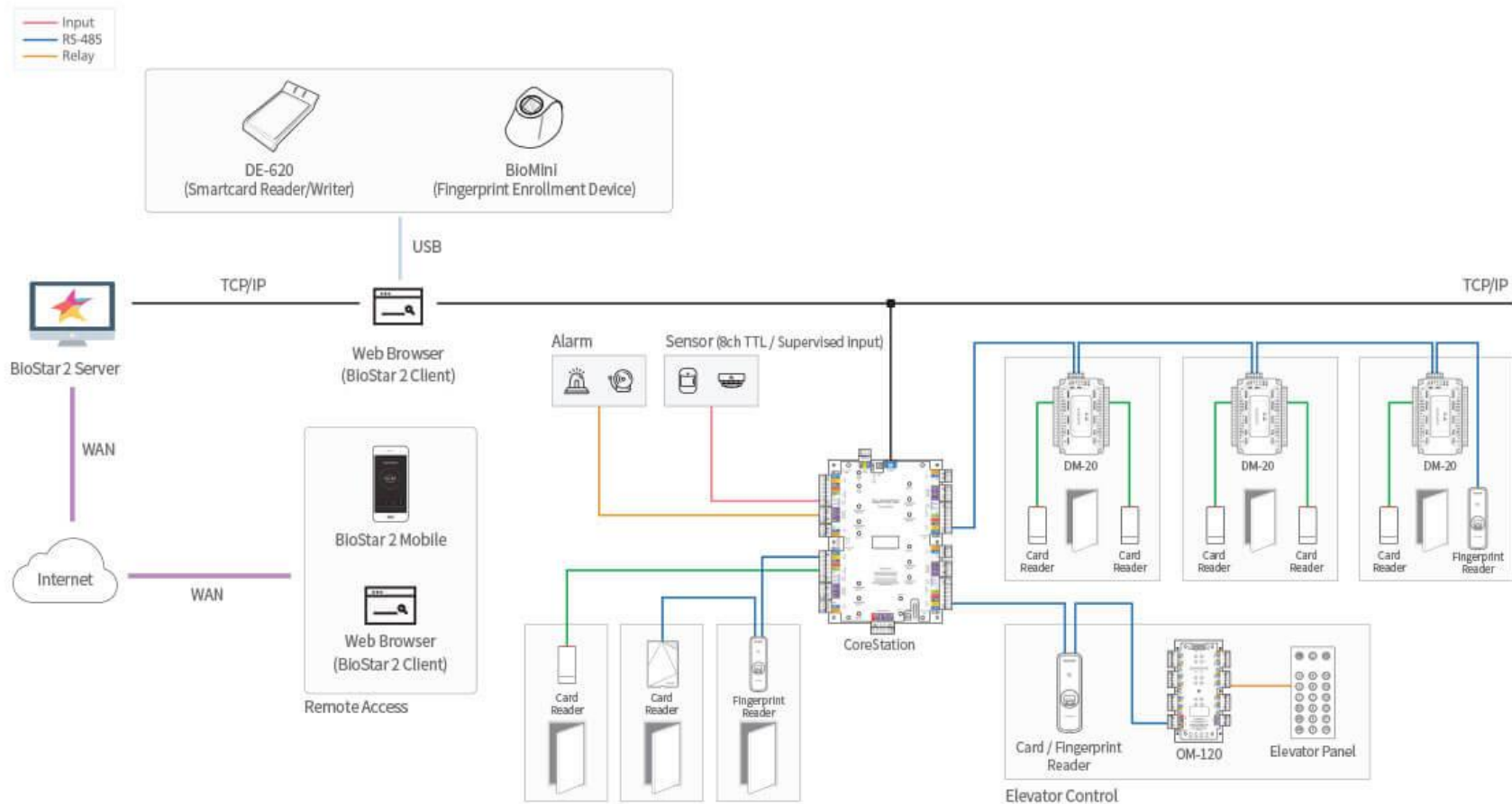
It is also able to manage centralized system or distributed system or both of them on the same main appliance



## 2 – What is BioStar2 Software

1. Webinar Goal 2. What is BioStar 2 Software 3. How to install with MariaDB 4. How to install with MSSQL 5. Quick Tour on simple features 6. Q&A

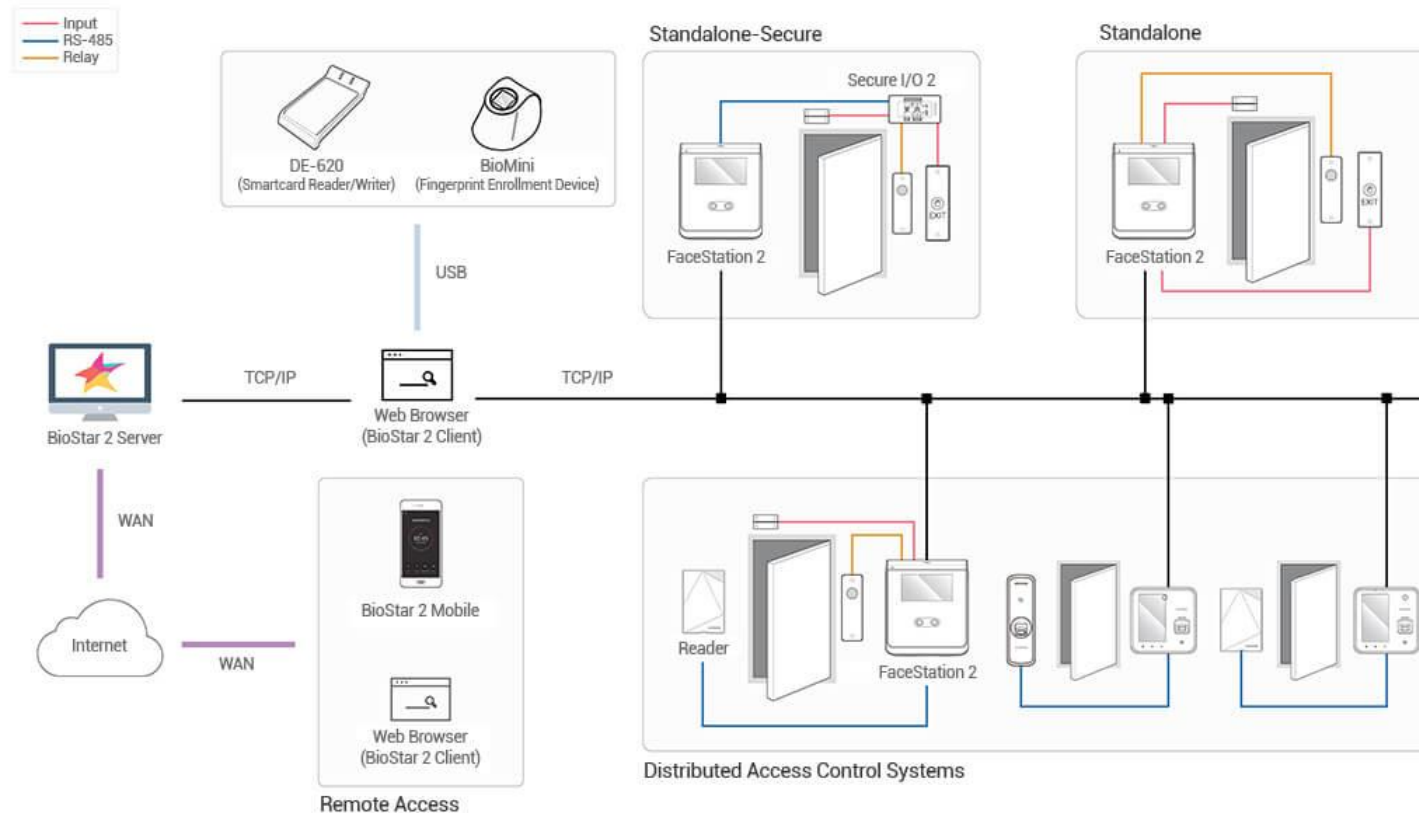
### Centralized System



## 2 – What is BioStar2 Software

1. Webinar Goal 2. What is BioStar 2 Software 3. How to install with MariaDB 4. How to install with MSSQL 5. Quick Tour on simple features 6. Q&A

### Distributed System

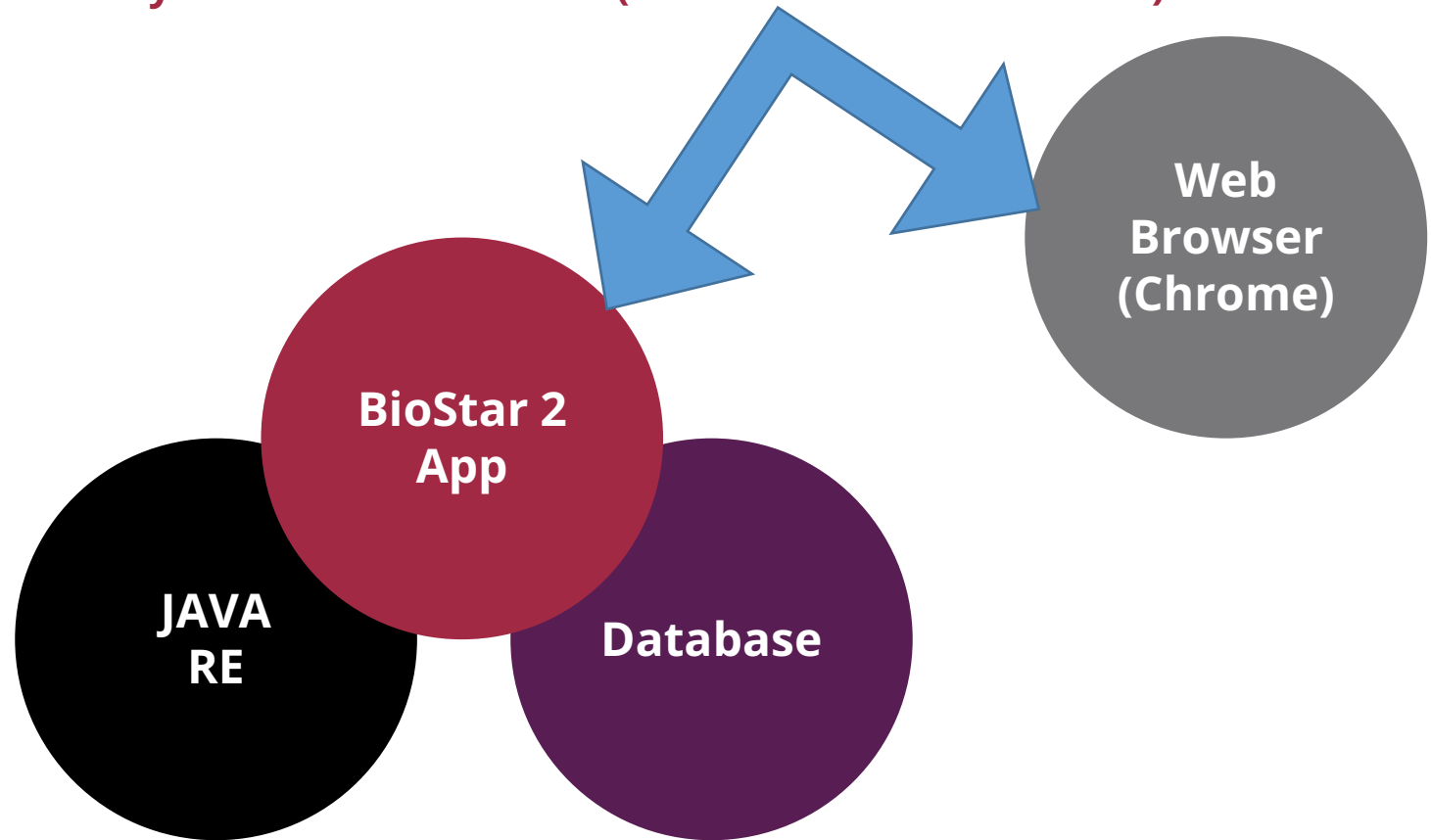


## 2 – What is BioStar2 Software

1. Webinar Goal 2. What is BioStar 2 Software 3. How to install with MariaDB 4. How to install with MSSQL 5. Quick Tour on simple features 6. Q&A

**BioStar 2 software is using Java Runtime and database**

**Accessing the software only need a web Browser (Chrome is recommended)**



## 2 – What is BioStar2 Software (usage)

1. Webinar Goal 2. What is BioStar 2 Software 3. How to install with MariaDB 4. How to install with MSSQL 5. Quick Tour on simple features 6. Q&A

### How could you use BioStar 2 :

#### 1- As a main system for access control and time attendance



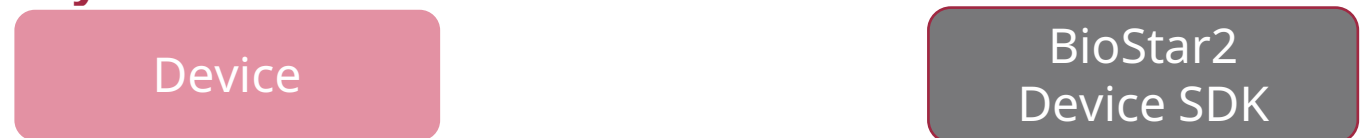
#### 2- As an engine for your own appliance (Web API)



#### 3- As a middleware for 3<sup>rd</sup> part ACU



#### 4- As a setup tool only



## 2 – What is BioStar2 Software (license)

1. Webinar Goal 2. What is BioStar 2 Software 3. How to install with MariaDB 4. How to install with MSSQL 5. Quick Tour on simple features 6. Q&A

### Access Control License

Items		Starter (free of charge)	Basic	Standard	Advanced	Professional	Enterprise
Access Control	No. of Doors	5	20	50	100	300	1,000
	Maximum No. of Connected Devices	1,000	1,000	1,000	1,000	1,000	1,000
	Maximum No. of Access Levels <sup>1)</sup>	2,048	2,048	2,048	2,048	2,048	2,048
	Maximum No. of Access Groups <sup>1)</sup>	2,048	2,048	2,048	2,048	2,048	2,048
	Maximum No. of Access Groups per User	16	16	16	16	16	16
	Maximum No. of Access Levels per Access Group	128	128	128	128	128	128
	Access Group Auto Sync	v	v	v	v	v	v
Users	Maximum No. of Cards per User	8	8	8	8	8	8
	Maximum No. of Fingerprints per User	10	10	10	10	10	10
	User Auto Sync	v	v	v	v	v	v
	Access-on-Card	v	v	v	v	v	v
	Security Credential Cards	v	v	v	v	v	v
	iCLASS Secu Card	v	v	v	v	v	v
	Inactivation User Reports	v	v	v	v	v	v
	Custom Field	v	v	v	v	v	v
Elevator Control	Elevators	-	-	-	v	v	v
	Maximum No. of Floors per Elevator	-	-	-	192	192	192
	Maximum No. of Floor Levels	-	-	-	128	128	128
Zones	Anti-Passback	△(Door)	△(Door)	v	v	v	v
	Fire Alarm	-	-	v	v	v	v
	Schedule Lock/Unlock	-	-	v	v	v	v
	Intrusion Alarm Zone	-	-	v	v	v	v
	Interlock Zone	-	-	v	v	v	v
	Muster Zone	-	-	v	v	v	v
Advanced Features	Dashboard	v	v	v	v	v	v
	Cloud	-	-	v	v	v	v
	Server Matching	-	-	-	v	v	v
	Audit Trail	v	v	v	v	v	v
	Daylight Saving Time	v	v	v	v	v	v
	Dual Authentication	v	v	v	v	v	v
Monitoring	Graphic Map	-	-	-	v	v	v

<sup>1)</sup>Available from BioStar 2.7.0. (Requires latest firmware)

### Time & Attendance Management License

Items	Starter (free of charge)	Standard	Advanced	Professional
No. of Users	100	500	1,000	unlimited

### Video Log License

Items	Starter (free of charge)	Video License
Video Log	-	v

### Visitor Management License

Items	Starter (free of charge)	Visitor License
Visitor Management	-	v



## 2 – What is BioStar2 Software

1. Webinar Goal 2. What is BioStar 2 Software 3. How to install with MariaDB 4. How to install with MSSQL 5. Quick Tour on simple features 6. Q&A

### BioStar 2 : Systems requirements

Item		Small	Medium	Enterprise
Environment	Total Devices	50	100	1,000
System requirement (Server)	OS	<ul style="list-style-type: none"><li>Windows 7 Home Basic 64bit SP1 or later</li><li>Windows 7 Home Basic 32bit SP1 or later</li></ul>	<ul style="list-style-type: none"><li>Windows Server 2008 R2 Standard 64bit SP2 or later</li><li>Windows 7 Home Premium 64bit SP1 or later</li></ul>	<ul style="list-style-type: none"><li>Windows Server 2008 R2 Standard 64bit SP2 or later</li><li>Windows 7 Home Premium 64bit SP1 or later</li></ul>
	Database	MariaDB 10.1.10, MS SQL Server 2012, MS SQL Server 2014 SP2, MS SQL Server 2016 SP1, MS SQL Server 2017		
	CPU	2 GHz Dual Core	4 GHz Quad Core	4 GHz Quad Core
	RAM	6 GB	10 GB	16 GB
	HDD	500 GB	1 TB	4 TB
	Others	Java 1.8.0_201		
System requirement (Client)	CPU	1 GHz	1 GHz	1 GHz
	RAM	4 GB	4 GB	4 GB
	Web Browser	Google Chrome 75 or later		

## 2 – What is BioStar2 Software (used port list)

---

1. Webinar Goal 2. What is BioStar 2 Software 3. How to install with MariaDB 4. How to install with MSSQL 5. Quick Tour on simple features 6. Q&A

### BioStar 2 : Used port list

#### Database :

Maria DB: 3312 (mysqld.exe)

ORACLE: 1521 (BioStar 2.4.1)

MSSQL: 1433

T&A: 3000(http), 3002(https) (node.exe)

#### File Sharing :

445 (WebDAV is used when the file is uploaded from server to client)

#### Nginx (web server) :

9000

#### Websock :

9002 (biostar-server.exe)

#### webserver\_thrift\_port :

9310 (java.exe)

#### BioStar 2 Server

51212 (default) (biostar-server.exe)

51213 (if TLS is used)

#### Web server :

HTTP 80 (default) & HTTPS 443 (default)

#### Cloud:

52000 (default) (nginx.exe \*32)

V1 8790(app), 8781(doc)

V2 8795(app), 8786(doc)

4443 (ngrok.exe \*32)

URL : cloud.biostar2.com, api.biostar2.com

#### (Local) API server :

27017 (default)

#### USB Agent :

HTTPS 8081 (default), HTTP 8082 (default) (usb-agent.exe \*32)

#### UDP (device search) :

51210

#### Device Port :

51211 (default)

## 2 – What is BioStar2 Software (Database choice)

---

1. Webinar Goal 2. What is BioStar 2 Software 3. How to install with MariaDB 4. How to install with MSSQL 5. Quick Tour on simple features 6. Q&A

### **BioStar 2 : How to choose between MariaDB and MS SQL**

- **MariaDB is the default DataBase for BioStar 2 due to :**
  - Open source (Original developers of MySQL)
  - Free solution (Foundation)
  - Easy to use (all is included inside Biostar 2 setup)
- **MS SQL is integrated due to :**
  - Active Support from Microsoft
  - Need technical team with good knowledge
  - Case when MS SQL is already running/certified on site

## 2 – What is BioStar2 Software (where to find answer)

---

1. Webinar Goal 2. What is BioStar 2 Software 3. How to install with MariaDB 4. How to install with MSSQL 5. Quick Tour on simple features 6. Q&A

**All information and help from this Webinar could be find from :**

- **Help menu from BioStar 2 web page**

-  <https://localhost/help/en/index.html?overview.htm>

- **Knowledge base web page**

-  <http://kb.supremainc.com/knowledge/doku.php?id=en:start>

- **Support web page**

-  <https://support.supremainc.com/en/support/home>

- **Brochure, Manual and driver web page**

-  <https://www.supremainc.com/en/support/main.asp>

# Contents

1. Webinar Goal
2. What is BioStar 2 Software ?
- 3. How to Install with MariaDB ?**
4. How to Install with MSSQL ?
5. Quick Tour on simple feature.
6. Questions and Answers

## **DISCLAIMER**

This presentation is solely for the use of Suprema's employees. No part of this material may be circulated, quoted, or reproduced for distribution outside the customer's organization without prior written approval from Suprema Inc. This material was prepared by Suprema Inc. solely for informative purpose and was not independently verified. No representations or warranties, express or implied, are made as to, and no reliance should be placed on, the accuracy, fairness or completeness of the information presented or contained in this presentation. © 2020 Suprema Inc. All rights reserved.

## 3- How to Install BioStar2 with MariaDB

---

1. Webinar Goal 2. What is BioStar 2 Software 3. How to install with MariaDB 4. How to install with MSSQL 5. Quick Tour on simple features 6. Q&A

- **Where to download BioStar 2 and release note:**

 <https://www.supremainc.com/en/support/biostar-2-pakage.asp>

## 3- How to Install BioStar2 with MariaDB

---

1. Webinar Goal 2. What is BioStar 2 Software 3. How to install with MariaDB 4. How to install with MSSQL 5. Quick Tour on simple features 6. Q&A



# Contents

1. Webinar Goal
2. What is BioStar 2 Software ?
3. How to Install with MariaDB ?
- 4. How to Install with MSSQL ?**
5. Quick Tour on simple feature.
6. Questions and Answers

## **DISCLAIMER**

This presentation is solely for the use of Suprema's employees. No part of this material may be circulated, quoted, or reproduced for distribution outside the customer's organization without prior written approval from Suprema Inc. This material was prepared by Suprema Inc. solely for informative purpose and was not independently verified. No representations or warranties, express or implied, are made as to, and no reliance should be placed on, the accuracy, fairness or completeness of the information presented or contained in this presentation. © 2020 Suprema Inc. All rights reserved.



## 4- How to Install BioStar2 with MSSQL

---

1. Webinar Goal 2. What is BioStar 2 Software 3. How to install with MariaDB 4. How to install with MSSQL 5. Quick Tour on simple features 6. Q&A


- **Where to download BioStar 2 :**

 <https://www.supremainc.com/en/support/biostar-2-pakage.asp>

- **Where to download MS SQL Express 2017 :**

 <https://www.microsoft.com/en-us/download/confirmation.aspx?id=55994>

- **New feature since BioStar 2.7.14 :**

 <https://support.supremainc.com/en/support/solutions/articles/24000053794--biostar-2-supports-windows-authentication-for-ms-sql-database-server-connections>

## 4- How to Install BioStar2 with MSSQL

---

1. Webinar Goal 2. What is BioStar 2 Software 3. How to install with MariaDB 4. How to install with MSSQL 5. Quick Tour on simple features 6. Q&A



# Contents

1. Webinar Goal
2. What is BioStar 2 Software ?
3. How to Install with MariaDB ?
4. How to Install with MSSQL ?
- 5. Quick Tour on simple feature.**
6. Questions and Answers

## **DISCLAIMER**

This presentation is solely for the use of Suprema's employees. No part of this material may be circulated, quoted, or reproduced for distribution outside the customer's organization without prior written approval from Suprema Inc. This material was prepared by Suprema Inc. solely for informative purpose and was not independently verified. No representations or warranties, express or implied, are made as to, and no reliance should be placed on, the accuracy, fairness or completeness of the information presented or contained in this presentation. © 2020 Suprema Inc. All rights reserved.

## 5- Quick tour on simple features

---

1. Webinar Goal 2. What is BioStar 2 Software 3. How to install with MariaDB 4. How to install with MSSQL 5. Quick Tour on simple features 6. Q&A

**Settings**

**Add a  
device**

**Add a  
user**

**Add a  
Door**

**Licences**

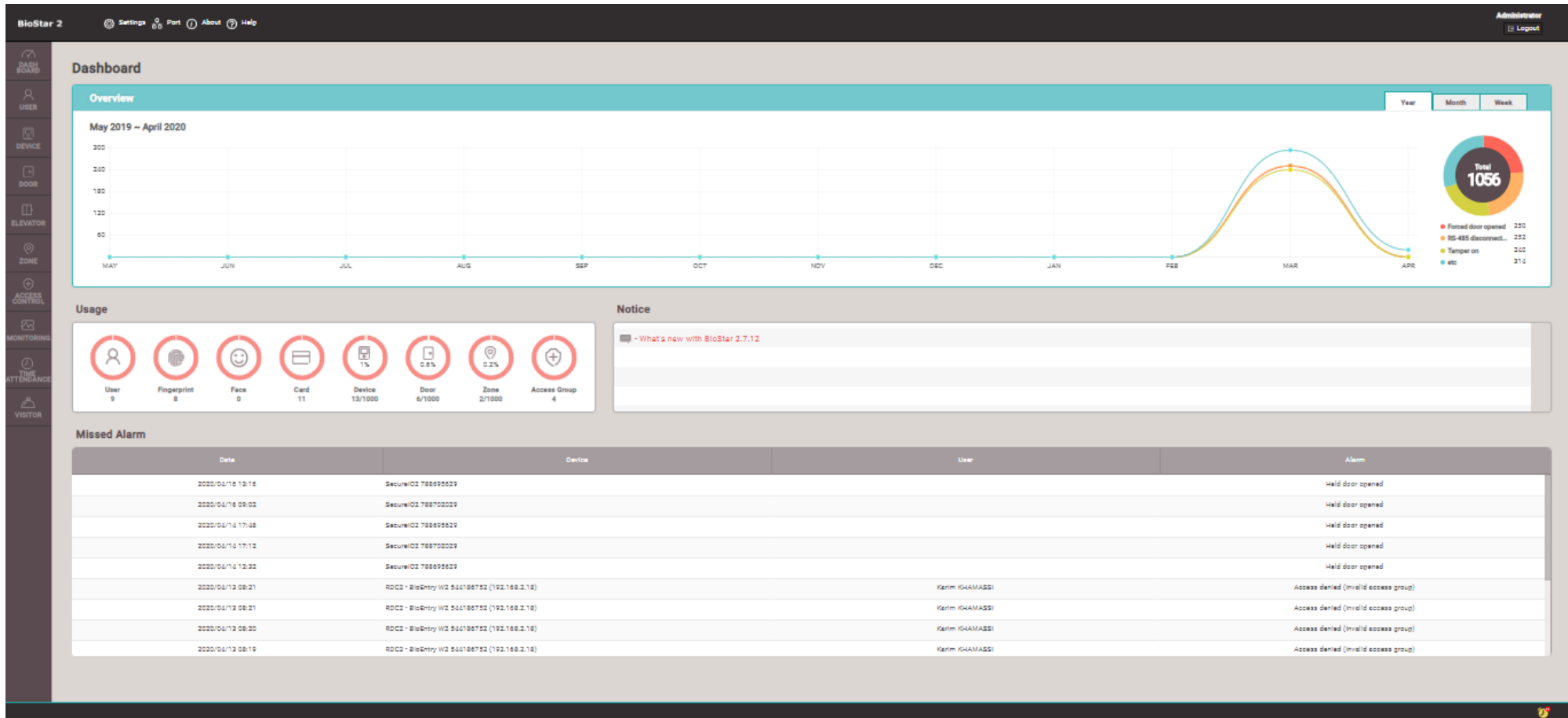
**Add a  
device  
group**

**Add a  
user  
group**

**Add  
access  
rules**

# 5- Quick tour on simple features

1. Webinar Goal 2. What is BioStar 2 Software 3. How to install with MariaDB 4. How to install with MSSQL 5. Quick Tour on simple features 6. Q&A



## 6- Questions and Answers

---

1. Webinar Goal 2. What is BioStar 2 Software 3. How to install with MariaDB 4. How to install with MSSQL 5. Quick Tour on simple features 6. Q&A

# Questions and Answers

# Thank you!